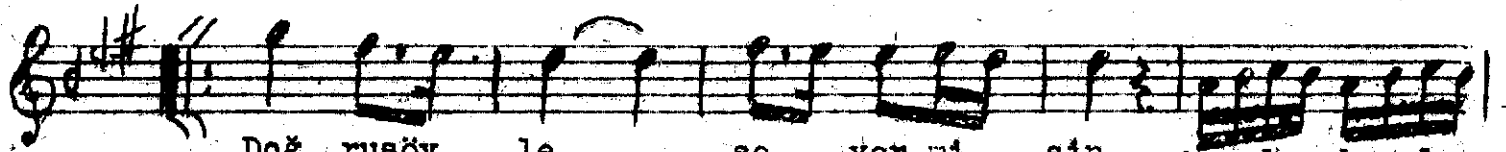
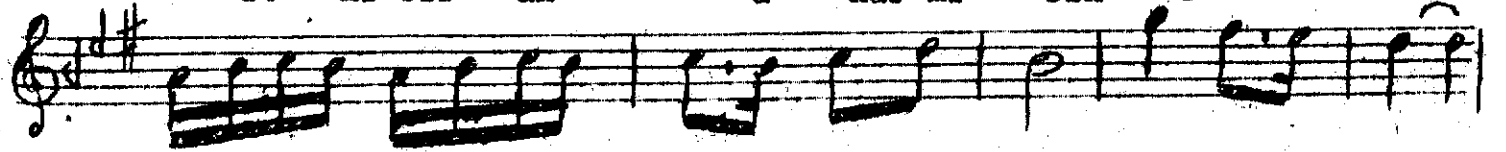


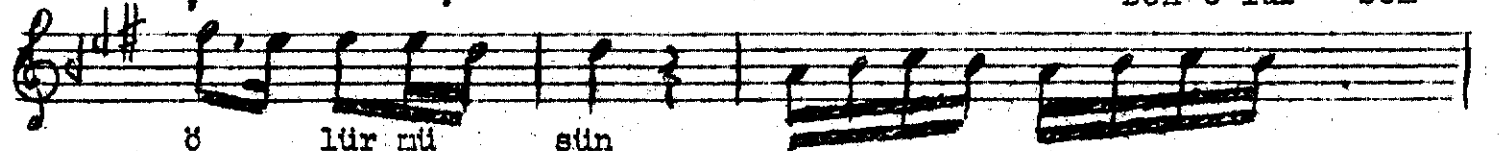
## Aşıkânesi



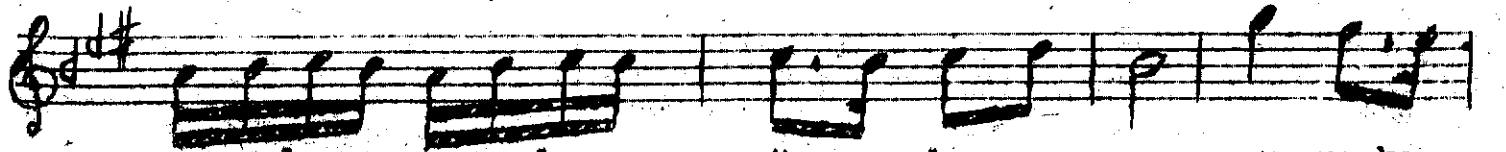
Doğ rusöy le se ver mi sin hecelenebecelene  
Be ni bir an a nar mı sin



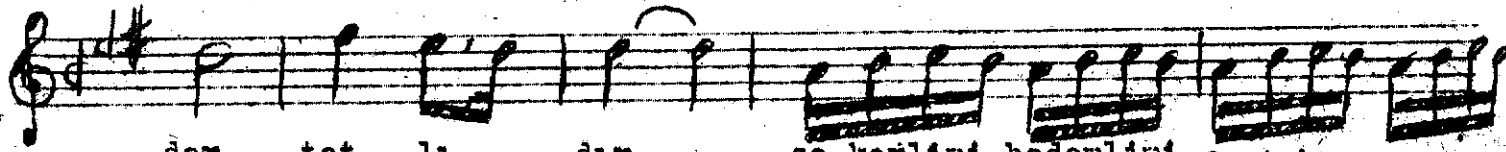
sece lene ne ce lene söy lese ne be nin i çin  
Ben ö lür sen



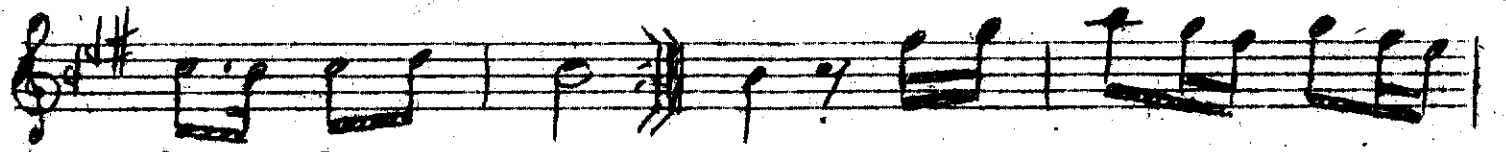
ö lür mü sün he ce le ne be ce le ne  
ya nar mı sin



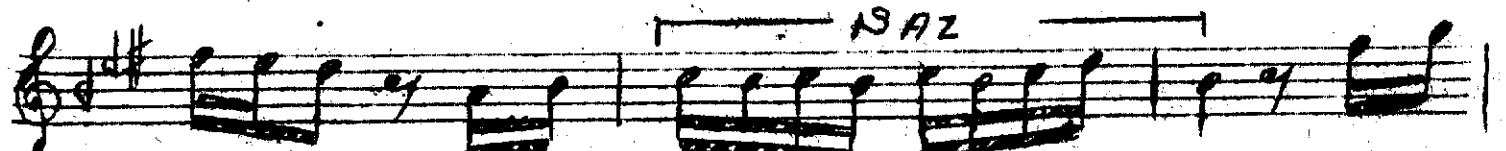
se ce le ne ne ce le ne söy le se ne yar ne ka



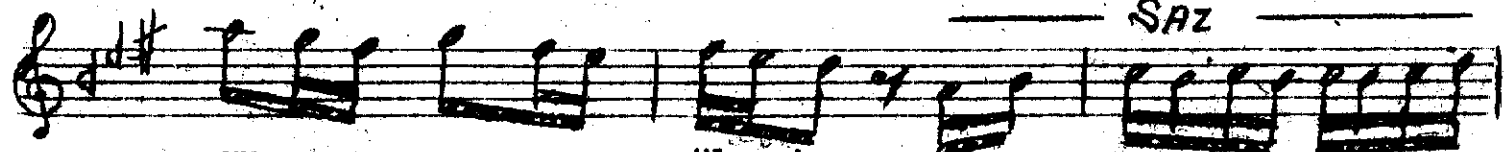
dar tat lıdır şe kerlini badeñlini fistic  
lim lokunlunu



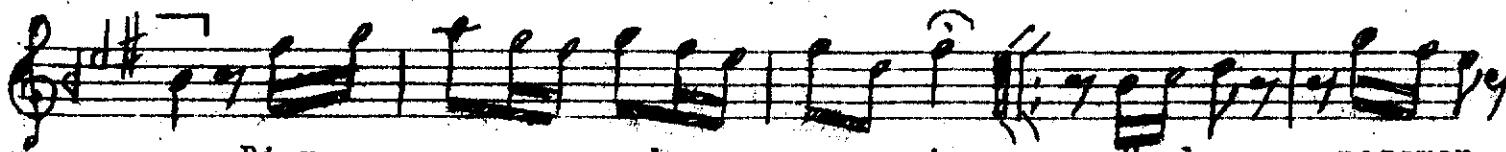
ba lı mıdır a nan a nan



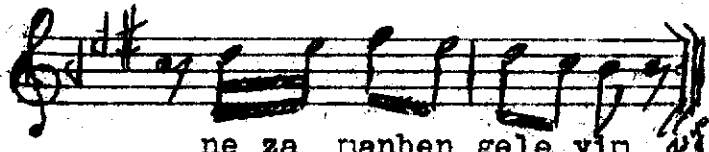
ne leğın SAZ uğ



ru na öle yin SAZ



Bi ra zı cık seve yin söy le nezanan



ne za nanben gele yin

Doğru söyle severnisin  
Hecelene, becelene, secelene, necelene söy  
Benin için ölürmüsün Hecelene .....  
Yar ne kadar tatlıdır şekerlini, badeñlini,  
fisticlinidir lokunlunudur.

Beni bir an anarmısın  
Ben ölürsen yanarmısın